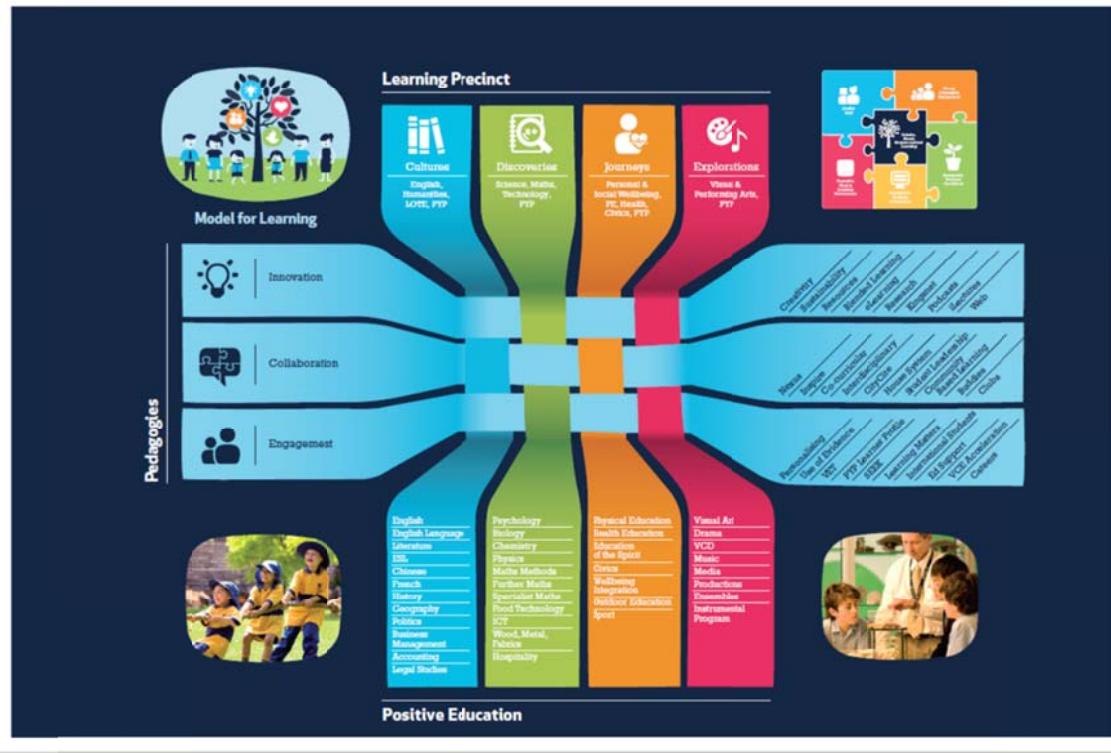




Learning And Teaching Through Innovation, Collaboration, Engagement

LATTICE Learning And Teaching Through Innovation, Collaboration, Engagement



2013 Annual Report



Where potential soars



2013 was a landmark year for the College. We consulted with our community on a major learning reform, LATTICE, building on our foundation documents – our Model for Learning, and our World Class School Jigsaw. With support from staff, families and the wider education community College leaders finalised our unique model Learning And Teaching Through Innovation, Collaboration and Engagement - LATTICE and set about planning for its implementation in 2014. Central to the new model is a focus on both how and what is taught, underpinned by the philosophy of Positive Education. This represents the future of education.

Within the LATTICE learning agenda, the College became a candidate school for the International Baccalaureate Organisation's (IBO) Primary Years Programme (PYP) and has begun the journey to accreditation. The values of the IBO and Kingswood College are very strongly aligned, and support the College ambition to be a world-class school.

Along with a new beginning there was also the end of an era, with the retirement of nine senior, longstanding staff members who had, between them, provided more than 200 years of service to Kingswood College. Celebrating their contribution and commitment over many decades was an important occasion.

Students at the College have continued to shine in all areas of our program. VCE results continued to improve with:

- 22% of students achieving an ATAR of 95+
- 32% of students achieving an ATAR of 90+
- 49% of students achieving an ATAR of 80+

Three students achieved scores of 99+:

- Sheryl Ding, our Social Justice Captain achieved 99.9, including a perfect

50 study score for English Language.

- Benjamin Lee achieved an ATAR of 99.7, including two perfect 50 study scores, and two Premier's Awards: one in Mathematical Methods and the other in VET Multimedia
- Monica Manley achieved an ATAR of 99.15 while making many important contributions both in and beyond the classroom

In another field of endeavour, the Human Powered Vehicle competition, where the College has been involved for fourteen years, we finished in first place at Maryborough in November. This triumph involved students across the secondary years, and the true manifestation of our Model for Learning which involves the education of the Mind, Heart, Body and Spirit in a community setting. Outstanding commitment from staff and families in support of our team contributed to the success of our students.

The Arts are part of the DNA of Kingswood College and sold out performances of our annual Production, *Return to the Forbidden Planet*, demonstrated the remarkable talents of our cast and crew, and in particular the skills of our VCE Theatre Studies students who took on major roles directing and leading the whole program. Our Annual House Performing Arts Festival was another high point of the year, again led by students.

The College values its Uniting Church affiliation, which was furthered in 2013 through our relationship with Billanook College and Cornish College. Shared professional learning activities focussed on the future of learning – for both staff and students.

At the heart of Kingswood College is our commitment to community, and the work of the College Council and Parents and Friends Association continues to support students, families and staff. We are indebted to these groups for their dedication, and appreciate their ongoing support.

Elisabeth Lenders

Principal

Kingswood College has a bold vision

‘To be a world-class school known for our innovation, collaboration and engagement; where our students’ potential soars because we nurture and challenge them to know themselves and achieve their personal best’.

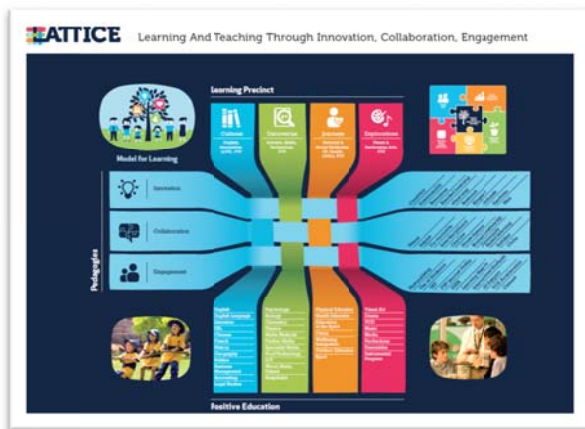
Model for Learning



At Kingswood College, our passionate, committed and caring teachers enthuse, enlighten and encourage their students to become the best young people they possibly can be.

Kingswood College students flourish through our commitment to the development of the whole student – their mind, body, heart and spirit in a community setting.

LATTICE – a whole new way of teaching



LATTICE stands for 'Learning And Teaching Through Innovation, Collaboration and Engagement'.

It is the cohesive, holistic model that Kingswood College is proud to have pioneered.

LATTICE is a leading edge education framework - and has been designed very much with the future in mind: it's an advanced, robust yet flexible model that incrementally integrates, supports and strengthens positive connections between teachers and students.

Because LATTICE is a more effective and dynamic way of teaching and learning, students are better equipped to take on challenges - now and in their future - study, personal and working lives. The supportive, communication based LATTICE framework is much more engaging for students. In short, LATTICE seamlessly integrates our four different Learning Precincts (or subject groups) with three different Pedagogies (or ways of teaching).

Across our four Learning Precincts of Cultures, Discoveries, Journeys and Explorations...we teach and communicate with the three distinct Pedagogies of Innovation, Collaboration and Engagement.

Governance

Kingswood College is a legally constituted Company limited by guarantee. The Kingswood College Council is responsible for the overall governance of the College, the setting of strategic direction, the review of plans and budgets established by the College Management, and the monitoring of performance against those plans and budgets.

The Council delegates responsibility for the operation and administration of the College to the Principal.

College Council members 2013 are:

Rev Dr Philip Hughes (Chair) *M.A., M.Ed., D.Theol.*

David Coddington (Deputy Chair) *B.A.Ec., B.A.Soc., G.Dip.M.M., M.M.R.S.A., A.I.M.M.*

Tess Brooks, *M.Special Ed, Grad.Dip.Ed., Dip.Teaching (Early Childhood)*

Stuart Castle, *B.Eng.(Civil), G.Dip.Mgmt.*

Richard Comerford, *B.Comm, M.Ed., CA*

Dr Kate Donelan, *B.A.(Hons), Dip.Ed., P.Grad.Cert. Drama (UK), M.Ed., PhD.*

Bibiana D'Souza, *LL.B.(Hons)*

Suzanne Dunlop, *B.Ec., G.Dip.Acc., Dip.H.R.*

Dr Nicholas Economou, *B.A.(Hons), M.A., PhD.(Melbourne)*

Janice Keynton, *B.Sc.(Hons), A.E.*

Rev Dharendra Narayan, *B.Theol., Adv.Dip.Min., Cert.Clinical Pastoral Education,*

Cert. Communications & Industrial Relations, Assoc.Dip. in Christian Ministry

Roger Parker, *B.Eng., M.Eng.Sc.*

Ex officio members

Elisabeth Lenders - Principal

Liam King - Deputy Principal—Learning & Teaching

Anthony Willis - Deputy Principal—Head of Middle School

Lee Perry - Business Manager/Company Secretary

By invitation

Alana Hollenberg, Parents and Friends Association President

Leadership & Management

In 2013 Kingswood College Leadership and Management team comprised:

Principal, Elisabeth Lenders

Deputy Principal – Learning & Teaching, Liam King

Deputy Principal – Wellbeing, Anthony Willis

Head of Senior School, Robyn Giles

Head of Junior School, Aaron Loats

Head of Daily Organisation, Lorraine Bignell

Business Manager, Lee Perry

Director of Community Engagement, Lynelle Dudman

Executive Assistant to the Principal, Michaela Sutherland

Human Resources

Kingswood College staff are dedicated professionals, who are passionate about the learning, health and wellbeing of students.

The Kingswood College workforce comprises 70% women and 30% men.

Staff at Kingswood College engage in Professional Development and Learning programs, higher degree studies, activities, conferences and courses each year to keep abreast of the latest learning and teaching practices and emerging curriculum.

A total of \$126,000 was spent in 2013 on professional development for the College teaching staff and allied educators.

Leadership and Management Team 2013

Principal Elisabeth Lenders, *B.A.(Hons), Dip.Ed., M.Ed., M.A.C.E.*

Deputy Principal – Learning and Teaching Liam King, *Dip. Teach, B.Ed., Grad.Dip. Curr., Grad.Dip.Ed.Admin & M.Ed.*

Deputy Principal – Wellbeing/Head of Middle School Anthony Willis, *B.Ed.*

Head of Senior School Robyn Giles, *B.Ed., M.Ed., M.A.C.E, M.A.C.E.L.*

Head of Junior School Aaron Loats, *B.Ed., B.A.*

Head of Daily Organisation Lorraine Bignell, *B.Sc., B.Ed., Grad. Dip.Comp.Ed.*

Business Manager Lee Perry, *B.Bus., CPA*

Director of Community Engagement Lynelle Dudman, *B.Bus.*

Executive Assistant to the Principal Michaela Sutherland, *Cert IV School Support Services, Dip.Mgmt.*

Staff During 2013

Maree Abonyi, *B.Sc., Dip. Ed., M.A.I. Biol., M.A.S.M., M.A.C.E.*

Gillian Alderson, *Dip. T., Grad.Dip.Comp.Ed*

Peter Alderson, *B.Comm., Dip.Ed., Cert.IV A.W.T., Adv.Dip of Arts (EDIM), ASA*

Saji Anil, *M.Ed., B.Sc., Dip.Ed.*

Astri Apsey, *Integration Aide*

Marek Bakowski, *B.A.(Hons),Dip.Ed., A.Mus.A., LTCL, Grad.Dip.(R.E.)*

Sureela Balwan, *B.A., Dip.Ed.,Grad.Dip.(T.E.S.O.L.), A.S.D.A.*

Caroline Barron, *B.Mus.Perf., B.Teach.(Primary & Secondary)*

Rev Greg Beck, *B.A., M.Div.*

Ryan Berg, *B. Physical Education Teaching, Min.Psychology*

Amanda Berryman, *Reception/Administration*

Katrina Berryman, *Tuckshop*

Melinda Blake, *Dip.App Sc. (Home Eco.), Grad.Dip.Ed., Cert. IV A.W.T., M.A.C.E.L.*

Ross Borchard, *B.A., Dip.Ed., M.T.E.S.O.L*

Linde Brush, *B.Sc.Ed.,Grad.Dip.Adol.Health, Grad.Dip.Info.Mgmt.*

Wilma Buccella, *B.A., Dip.Ed., Grad.Dip. (T.E.S.O.L.), Cert. IV A.W.T.*

Sally Cameron, *Dip.Ed (Primary), Dip. Bus. Admin, Grad. Dip. (Music)*

Greta Caruso, *B.A., Dip.Ed., Grad.Dip (T.E.S.O.L.), M.Ed., Cert. IV A.W.T.*

Stephen Cattafi, *Library Technician – Audio Visual*

Yang Chen, *B.A., M.Ed.*

Nicole Cherny, *Junior School Secretary*

Wendy Corser, *BECS, M.Ed.*

Laura Daley, *B.App.Sc. (Human Movement), Dip.Ed.*

Lucy Dalziel, *Sport Assistant*

Christina Davis, *B.A., B.Teach*

Allison Dell'oro, *Dip.T (Primary), Grad.Cert.Sp.Ed., M.Sp.Ed.*

Roger Dillon, *B.A., Dip.Ed., Grad.Dip.App.Sc.(Professional Psychology).*

Sue Donoghey, *Early Learning Centre Assistant*

Hayley Dustow, *B.A., B. Teaching*

Howard Elston, *B.Engineering (Chem) (Hons.), B.Teach (Primary & Secondary)*

Grant Exon, *B.Arts, B. Teach (Secondary)*

Kate Ferguson, *B.Ed., Grad.Dip.(Health Ed.), Grad.Dip.(Maths Ed.), Grad.Dip.(IT)*

Marygabrielle Fitzgerald, *T.T.T.C., Dip.App.Sc.(Food), Cert. IV A.W.T.*

Jason Flanagan, *B.Ed.*

Heidi Ford, *B.A., B.T.*

Narelle Gassner, *Registrar*

Kay Gilmore, *B.A., Dip.Ed.*

Vlad Ginaylo, *B.Comp., M.C.I.T.P., C.C.N.A*

Bernadette Gioia, *Dip.T (Early Childhood), B.Ed. (Primary Conversion)*

Marta Gorondi, *B.Ec., Dip.Ed., Grad.Dip.Career Development, Cert. IV A.W.T.*

Judy Halligan, *Hospitality Assistant*

Catriona Hanna, *Library Technician*

Sue Harriage, *L.T.C.*

Sarah Hart, *B.Sc, Grad.Dip.Ed., Cert. IV A.W.T.*

James Herschell, *B.App.Sci., Dip.Ed., Cert (IV) Fitness, Cert. Level 1 Ski Instructor*

Sandra Ho, *Cert.T., Dip.T., Cert.(Computer Operator), B.Ed.*

Vanessa Hollow, *Facilities*

Vince Hopkins, *Instrumental Music*

Kathryn Howard, *B.Ed*

Joan James, *Dip.T., Cert.A.*

Samantha Jansen, *Dip.Ed.*

Nick Karanikolas, *B.Chem.Eng., Dip.Ed.*

Julie Keegan, *Receptionist, Administration*

Beverly Langsford-Willing, *M.Bus., B.A., Dip.Ed., A.Mus.A*

Nashua Lee, *B.A.*

Ian Leith, *Dip.T(Sec.), B.Ed*

Elli Lightbody, *B.Ed (Visual Art), Grad.Dip.ICT*

Fay Lovus, *Tuckshop*

Daniel Luttick, *Instrumental Music*

Jirrah MacArthur, *B.A.(Hons.) Mus., M.Mus., Dip.Ed.*

Jacinta Mackay, *Executive Assistant to Deputy Principal – Learning and Teaching*

Brenda Mackintosh, *B.Vis.Art., Ad.Dip. Gr.Des. & Multi., Dip.Ed., Cert. Art & Design*

Philomena McCormack, *Certificate III in Children's Services*

Tara McDougall, *Dip.Music Perf.(Jazz Popular), Adv.Dip.Music Perf.(Jazz Popular),
B.Arts(Lit), B.Ed(Sec)*

Fiona McKay, *B.Arts (Youth Affairs), Cert.III in Education Integration Course*

Cathy McLean, *Dip.T (Primary), Grad.Dip.Spec.Ed.*

Lucinda Malgas, *M.A.*

Dianne Mawby, *B.A., Dip.Ed., Post Grad.Dip.HR & IR, Grad.Dip.Psych., Post
Grad.Dip.Psych.*

Michael Meagher, *Instrumental Music*

Phoebe Mellody, *Bachelor of Early Childhood Education*

Andrea Mena, *B.Perf.Art(Hons), DipEd, P.Grad.Dip.Dram.Art(Thtre/Dir)*

Danielle Munro, *Dip. Children's Services, B.Ed (Early Childhood and Primary)*

Iain Murphy, *B.App.Sci., Dip.Ed*

Steven Neal, *Facilities*

Kathryn Nelson, *Dip.Ed., B.Ed., B.A.*

Michelle O'Keeffe, *B. App.Sci. (Human Movement), Dip.Ed.(Sec.)*

Libby Olifiers, *Dip.Ed.(Early Childhood.Primary), B.Ed.*

Rob Olifiers, *Dip.Teach., B.Ed.*

Tom Palmer, *B.Arts(Visual Arts), Dip.Ed.*

Chris Pappas, *B.Mus.Performance (Honours)*

Jill Parker, *B.Sc., Grad.Dip.L/ship, Grad.Dip.Bus., M.Bus (IT), Cert. IV A.W.T., Dip Ed.*

Adam Piechocinski, *Music*

Bernadette Piekacz, *Middle School Secretary*

Leeanne Pike, *Dip.Teach.*

Jocelyn Pollock, *Senior School Secretary*

Andrew Power, *Music*

Matthew Price, *Dip.T (Primary) Deakin, B.Ed. (Special Ed.) E.C.U., Cert. IV A.W.T.*

Barbara Pritchard, *Dip.Prim.Tch., B.Mus, M.Ed., B.Theology*

Michelle Radcliffe, *M.Ed (Student Wellbeing), B.Ed.(Prim.), Grad.Dip.Psych., Dip.Creative Arts (Theatre), Dip.Mod.Lang.(Chinese), M.A.C.E.*

Donna Rady, *Dip.T., B.Ed., M.Ed., M.A.C.E.*

Sally Ranson, *B.A.(Hons.), Post Grad.Cert.Ed.*

Megan Reed, *Dip.Community Services(Children's Services), B.Arts(Early Childhood Education)*

Andrew Robertson, *B.Sc., Dip.Ed., Cert.IV A.W.T.*

Terrence Robertson, *Facilities Manager*

Adrian Romanyk, *Facilities*

Anne Salamouras, *Accounts Receivable*

Brenda Schaefer, *B.A., B.Ed., Dip.Ed., Grad.Dip.Psych., Post Grad.Dip Psych.*

Christopher Skepper, *Dip. Arts (Mus), Dip. Ed., A.Mus.A*

Peter Smith, *B.A.(Hons), P.G.C.E., Grad.Dip.Special Ed., M.Special Ed.*

Ken Speedy, *B.Sc., Dip.Ed.*

Tracey Spiel, *Ass. Dip. App. Sci., Grad.Dip.Careers Education*

Sarah Spring, *B.Ed.*

Dominic Steele, *B.Mus (Hons), M. Mus.*

Beverley Stewart, *B.A., Dip.Ed., Grad.Dip.(Curriculum)*

Jack Stewart, *Adv.Dip.Mus., B.Mus., Dip.Ed.*

Judy Taylor, *B.Ed Arts (Sec)), Grad.Dip. Drama Ed., Grad.Dip. Media Studies, Grad.Dip. ICT, Grad.Dip. Student Welfare, M.A., Postgrad.Cert. Careers Ed.*

John Tinham, *Caretaker, Facilities*

Huebinh Trinh, *Tuckshop*

Sula Tyndall, *B.A., B.Bus.Man., Dip.Ed.*

Anne Walker, *Accounts Payable/Payroll Officer*

Stephanie Watson, *Art Assistant*

Brenna Wee, *M.Music Perf., M.Music Studies (Teaching/Performing), Dip.Ed, B.Music (Perf.), L.Mus.A.*

Steven Wiggs, *B.Comp.Sc., M.C.S.E.*

Bruce Wilson, *T.S.T.C. (Art & Craft), Associate Dip. of Art (Fine Art)*

Nancy Zhao, *B.A., Grad.Dip.Ed.(Sec.), N.A.A.T.I. English to Chinese Translator*

Dawn Zillman, *B.Ed., Grad.Dip.Graphic Comm., M.Ed., Dip.Hort.*

Students

Student attendance

Students at the College are committed to their studies and involvement in co-curricular activities and this is evident in a daily attendance across the College of 94.58% in 2013. Figure 1 below outlines the student attendance by year level.

Year Level	Total Male	Total Female
Prep	93.54	94.18
1	96.97	96.62
2	95.61	96.45
3	95.66	95.77
4	94.42	91.3
5	91.68	94.9
6	97.16	94.82
7	94.18	96.8
8	94.95	92.4
9	95	89.61
10	95.5	90.97
11	95.36	95.87
12	96.07	93.27

Figure 1: Student attendance in 2013.

Attendance at Junior School

Student attendance is taken twice a day in the Junior School and is recorded electronically in the College's record keeping system Kingsnet. The first attendance check is taken and recorded during Period 1 at 8.30am and then again in Period 5 at 1.35pm.

Parents of students who are absent are required to phone or email the Junior School Office to notify the College and the reason for the absence.

Parents of students arriving late at the College or leaving early must sign the register in the Junior School Office advising the time and reason for late arrival or early departure.

Attendance at Middle School

Student attendance is taken in the Middle School during morning Wellbeing Session i.e. between 8.20am-8.30am and is recorded electronically in the College's record keeping system Kingsnet. Every class from thereon, Periods 1-6, Roll Marking takes place before proceeding with lessons.

Parents of students who are absent are required to phone or email the Middle School Secretary to notify the College and the reason for the absence. Upon return from extended absence students must have a signed note from parents explaining the reason for their absence.

Students arriving after 8.30am at the College or students leaving early must sign the register in the Middle School Reception advising the time and reason for their late arrival or early departure.

Any discrepancies in attendance are followed up by the Middle School Secretary and the Wellbeing Mentor. Anthony Willis, Deputy Principal and Head of Middle School receives requests for extended family holiday leave prior to the planned leave either via email or letter.

Attendance at Senior School

The Roll is marked each morning at Wellbeing at 8.20am. Rolls are then marked during the school day by the subject Teachers. Any discrepancies are followed up at the end of the day.

Students who have Private Study sign in when they arrive and sign out when they leave.

Parents of students who are absent are required to phone or email the Senior School Reception to notify the College and the reason for the absence.

Students arriving late at the College or students leaving early must sign the register in the Senior School Reception advising the time and reason for their late arrival or early departure.

Any discrepancies in attendance are followed up by the Senior School Secretary and the Year Level Coordinators.

Parent, student and teacher satisfaction with the College

Parents

In 2011, Kingswood College surveyed parents from across the College, with 143 respondents to the Parent Satisfaction Survey. 87% of respondents were mothers and 13% were fathers.

Domain Averages	Kingswood College Junior School	Independent Schools Victoria Mean
Curriculum/Academic Program	8.06	8.04
Quality of Teaching	7.95	8.11
Learning Outcomes	8.09	8.02
Pastoral Care	8.13	8.3
Discipline and Safety	8.22	8.07
Parent Involvement	7.88	8.18
Resources	8.2	8.16
Year Transition	8.29	8.18

Figure 2: Kingswood College's Junior School means for each domain in 2011 and the Independent Schools Victoria's reference means.

Domain Averages	Kingswood College Middle & Senior School	Independent Schools Victoria Mean
Curriculum/Academic Program	8.03	7.85
Quality of Teaching	7.86	7.68
Learning Outcomes	7.9	7.85
Pastoral Care	8.2	8.07
Discipline and Safety	8.09	7.98
Parent Involvement	8.13	8.14
Resources	8.15	7.85
Year Transition	8.14	7.88

Figure 3: Kingswood College's Middle and Senior School means for each domain in 2011 and the Independent Schools Victoria's reference means.

Overall the parent satisfaction of Middle and Senior School parents was 8.63 compared to the overall mean for independent schools of 8.31; and parent recommendation of the College to others was 8.68 compared with 8.36.

Students

In 2011, Kingswood College surveyed students from Years 5-12 across the College, with a total of 761 responses, with 400 students completing the Student Satisfaction survey and 361 students completing the Quality of Teaching survey.

Domain Averages	Kingswood College	Independent Schools Victoria Mean
Academic Program	7.6	7.1
Learning Outcomes	7.8	7.5
Pastoral Care	7.5	7.2
Personal Development/Leadership	7.6	7.2
Discipline and safety	7.7	7.3
Resources	7.5	7.4
School Ethos Values	7.4	7.4
Peer relationships	7.8	7.6
Year Transition	7.8	7.5

Figure 4: Kingswood College students in Years 5-12 means for each domain in 2011 and the Independent Schools Victoria's reference means.

Students overall satisfaction with Kingswood College is 7.7 compared with the independent schools mean of 7.4.

Teachers

In 2011, Kingswood College surveyed teachers and allied-educators from across the College. There was an 81% response rate with 83 of 106 nominated staff responding.

Domain Averages	Kingswood College	Independent Schools Victoria Mean
Feedback	6.3	6.7
Goal Alignment	8.7	8.2
Leadership & Morale	7.8	7
Staff Collaboration	8.3	8
Professional Development	8.7	8.1

Figure 5: Overall satisfaction for each domain for teaching staff at the College compared to the independent schools reference groups.

Overall staff satisfaction at Kingswood College was 8.9 compared to the ISV Mean of 8.7.

Student outcomes in state and national testing

NAPLAN

Percentage of Kingswood College Students above the National NAPLAN Benchmarks:

YEAR LEVEL	MINIMUM STANDARD BAND	READING	WRITING	SPELLING	GRAMMAR & PUNCTUATION	NUMERACY
		2013 (2012)	2013 (2012)	2013 (2012)	2013 (2012)	2013 (2012)
3	2	100% (100%)	100% (100%)	96% (87%)	100% (100%)	100% (100%)
5	4	97% (100%)	95% (100%)	95% (91%)	97% (100%)	92% (100%)
7	5	87% (94%)	80% (87%)	87% (91%)	87% (100%)	92% (100%)
9	6	90% (93%)	82% (81%)	77% (79%)	90% (89%)	98% (96%)

Figure 6: Percentage of Kingswood College Students above the National NAPLAN Benchmarks.

Student outcomes in state and national testing

Year 12 Class of 2013

The Year 12 Class of 2013 comprised 69 students; 60 local students and 9 international students.

Student results were of the highest standard since the introduction of ATARs:

- 21.5% of students who sat for the exams achieved ATAR scores 95 and above – which puts them in the top 5% in Australia
- 32.3% of our students achieved ATAR scores of 90+ placing them in the top 10% nationally.
- 49.2% of our students achieved ATAR scores of 80+ which puts them in the top 20% in Australia

Post school destinations for the Class of 2013

- 95% were offered a university place.
- 5% were offered a TAFE place.

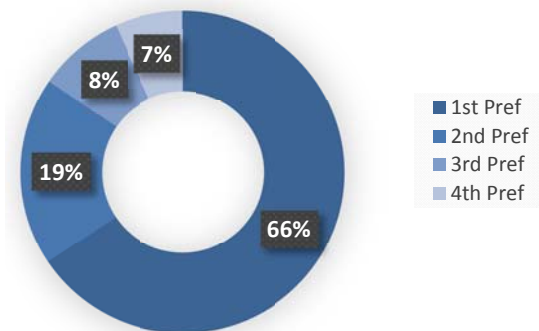


Figure 7: VTAC first round offers

Graduating students accepted places in a diverse range of university courses and reflected the interests and aspirations of each student.

Courses attracting the most interest were Business/Accounting/Finance, Health Sciences, Environments and Design Industries.

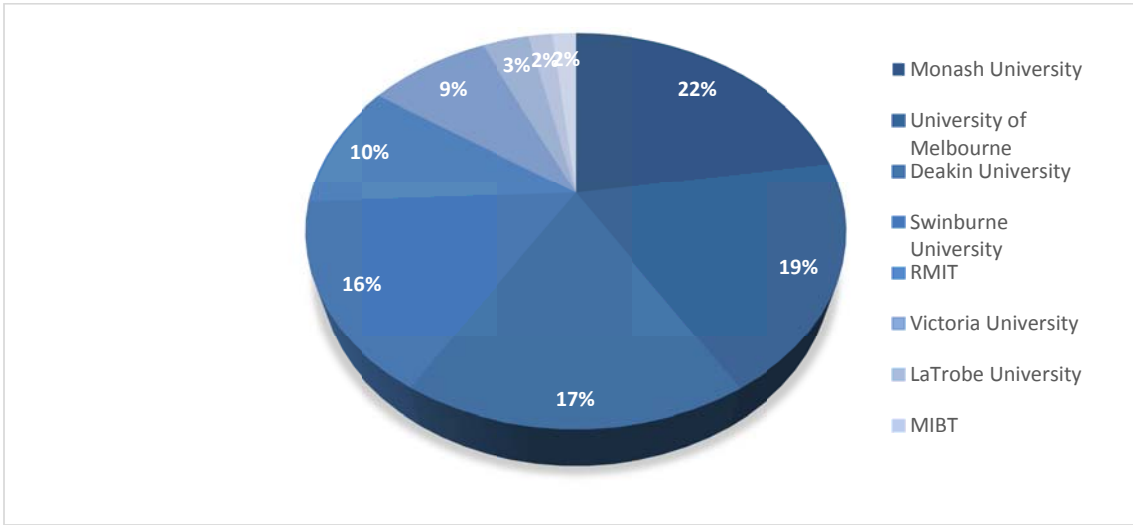


Figure 8: University destinations

The top five universities offering places for Kingswood College students as outlined in Figure 8 above from the Class of 2013 were Monash University, The University of Melbourne, Swinburne University, RMIT and Victoria University.

Facilities

In 2013 the Early Learning Centre and Junior School were repainted and recarpeted throughout.

All classrooms were fitted with new tables and brightly coloured chairs enhancing the learning spaces for all students.

The College grounds have undergone a dramatic transformation with improved garden beds, tree and shrub plantings throughout the Junior, Middle and Senior Schools.



Finance

Kingswood College combined income received during 2013 was \$13,046 million generated overwhelmingly from fees paid by parents as outlined in Figure 9 below. College expenditure is outlined in Figure 10.

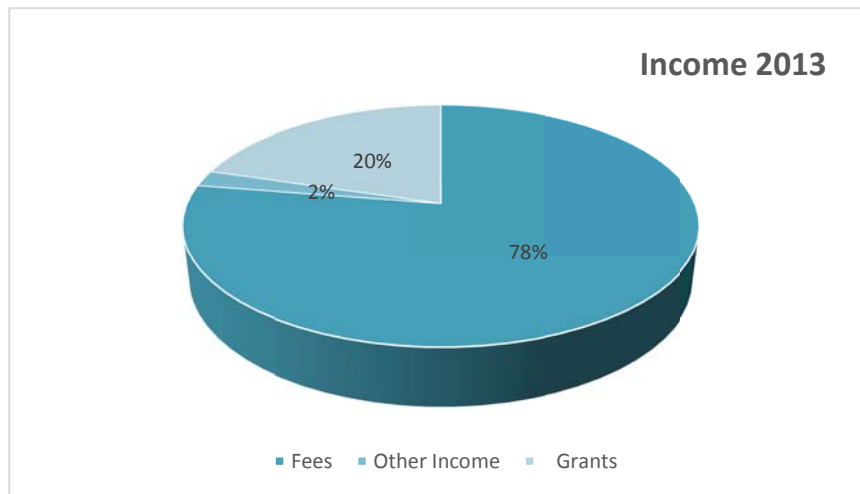


Figure 9. Income for Kingswood College 2013

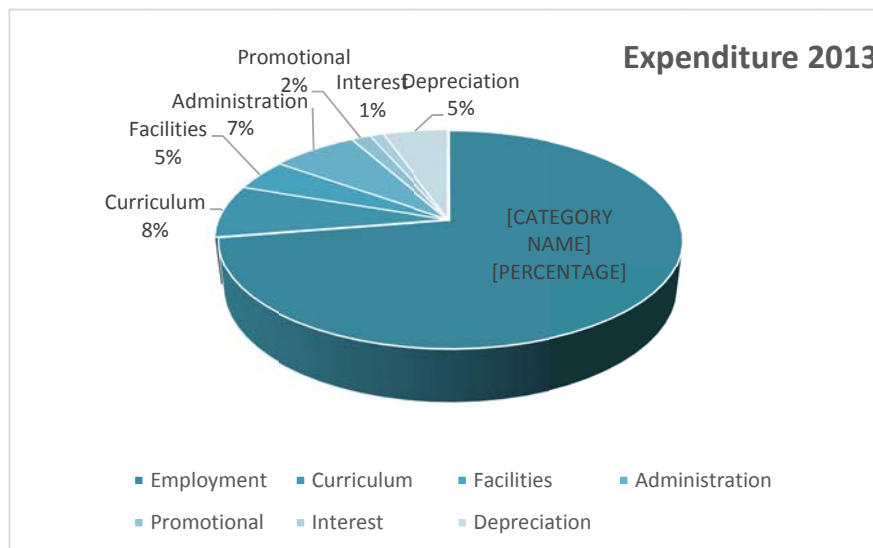


Figure 10. Kingwood College expenditure 2013

Acknowledgements

The College is pleased to have received funding from the Australian Government Department of Education, Employment and Workplace Relations under the National School Chaplaincy and Student Welfare Program.

Kingswood College acknowledges the Victorian State Government for its recurrent funding for independent schools and for funding of students with special requirements.





355 Station Street, Box Hill

Victoria, Australia 3128

T: +61 3 9896 1700

E: kwc@kingswoodcollege.vic.edu.au

www.kingswoodcollege.vic.edu.au

CRICOS Provider 00150G